

Art & Design

From Damien Hirst to Stella McCartney, we pick six of the best shows in April

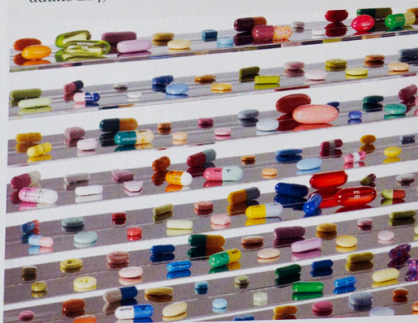
Damien Hirst

4 April to 9 September 2012

Tate Modern, London

This exhibition is the first major survey of Damien Hirst's work to be held in the UK. Bringing together more than 70 of the artist's seminal pieces, the exhibition will include sculptures such as *The Physical Impossibility of Death in the Mind of Someone Living*, in which he suspended a shark in formaldehyde, and *Mother and Child Divided*, a four-part sculpture of a bisected cow and calf. Alongside these sculptures will be paintings made throughout Hirst's career from his spot, spin, butterfly and fly series. In addition, two major installations will be on view: *In and Out of Love* 1991, and *Pharmacy* 1992.

Tate Modern, Bankside, London, SE1 9TG. Opening hours: Sunday to Thursday 10am-6pm, Friday and Saturday 10am-10pm. Admission: adults £14, concessions £12.20. www.tate.org.uk/modern



Lullaby, the Seasons Spring 2002 (Detail)
Steel, glass and pills
© Damien Hirst and Science Ltd.
All rights reserved.
DACS 2011.
Photographed by
Prudence Cumming
Associates.



Charline von Heyl

Until 27 May 2012

Tate Liverpool

Distinctive, imaginative and always surprising, Charline von Heyl's work offers a fresh and exciting approach to the world of abstract art. Von Heyl is at the forefront of a new generation of abstract painters who have rejected late modernism's emphasis on a singular signature style. Often employing unconventional painting methods and actively resisting a single style or vision, she has constantly reinvented painting, and been at the forefront of the resurgence in painting that started in the 1980s. This is the first major UK exhibition of her work, featuring more than 40 large canvasses and a number of unique works on paper, the exhibition explores von Heyl's work from 1990-2011. Tate Liverpool, Albert Dock, Liverpool, L3 4BB. Opening hours: daily 10am-5pm. Admission: adults £7.20, concessions £5.40, children free. www.tate.org.uk/liverpool

Charline von Heyl, *Lack and Excess* 2011
Acrylic on linen, 508 x 457 mm
© Charline von Heyl, Courtesy of Fredrich Petzel Gallery, New York. Photograph: Larry Lamay

Glamour / Sport and Fashion

Until 30 December 2012

Fashion Museum, Bath

There are two exhibitions running at the Fashion Museum this year. Glamour is a dazzling new display of eveningwear fashion from the past 100 years. Featuring 22 show-stopping evening gowns and cocktail dresses, Glamour presents a glittering array of sumptuous silks and bejewelled creations by British designers, including dresses by Norman Hartnell, Hardy Amies, Michael Sherard and Zandra Rhodes. In the year of the 2012 Olympics, Sport and Fashion examines the close connection between active sportswear and fashion by showcasing examples of historic sportswear from the museum collection alongside modern fashions and the very best of today's sportswear. There are Victorian riding habits, 1920s' tennis dresses and the latest sportswear from Pam Hogg, Vivienne Westwood and Stella McCartney.

Fashion Museum, Assembly Rooms, Bennett Street, Bath, BA1 2QH. Opening hours: daily 10.30am-5pm. Admission: adults £7.50, concessions £6.75, children £5.50.

www.museumofcostume.co.uk



Image courtesy of Adidas
by Stella McCartney
Photographer: Glen
Loudon 30 Art Director

Hidden Heroes

Until 5 June 2012

Science Museum, London

Hidden Heroes looks at how creativity, science and problem solving lead to the design of everyday objects such as the tea bag, paper clip, post-it notes and bubble wrap. Many of the 36 chosen objects have remained unaltered for many years. All are constantly used and demonstrate a simple, ingenious design. In some cases, the success of each product reflects changes in cultural and industrial history: the pencil suggests the spread of education and writing and the tin can illustrates the industrialisation of food production. The featured inventions are presented alongside original sketches and drawings by their inventors – illustrating the process from idea to final object. Patent specifications and original advertisements reveal the efforts made to establish each product. The exhibition also reflects the ways in which these objects continue to provide inspiration to others.

Science Museum, Exhibition Road, South Kensington, London, SW7 2DD. Opening hours: daily 10am-6pm.

Admission: adults £6, students and children £3.50.

www.sciencemuseum.org.uk



The Castell 9000 pencil.
A. W. Faber-Castell Corporate Administration / Archive & Collections

H.M. Bateman: The Man Who Went Mad on Paper

11 April to 22 July 2012

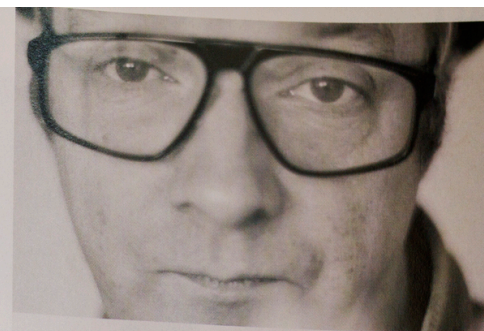
The Cartoon Museum, London

H.M. Bateman (1887-1970) is acknowledged as the first modern master of British cartooning. This major retrospective features more than 120 original cartoons on the themes of work, leisure and sport, suburbia, and of course the social faux pas that was the basis for his great series *The Man Who...* drawings, which appeared in *Tatler* in the 1920s and 1930s. His acute observation of social nuances have given his cartoons their enduring appeal and made him such an influence on later generations. Artists such as Ronald Searle, Ralph Steadman, John Jensen and Steve Bell have all cited him as an inspiration.

The Cartoon Museum, 35 Little Russell Street, London, WC1A 2HH. Opening hours: Tuesday to Saturday 10.30am-5.30pm, Sunday 12pm-5.30pm.

Admission: adults £5.50, £4, under-18s free. www.cartoonmuseum.org

The Banned Book © H.M. Bateman designs



Mark Stringer & Rita Says: Into the Ordinary

6 to 29 April 2012

Hundred Years Gallery, London

A thoughtful and thought-provoking show by Mark Stringer and Rita Says. The exhibition features films, paintings, drawings, sculpture, and writings, that celebrate the everyday and the ordinary. This body of work, by way of recording unremarkable events, invites us to embrace and celebrate all that is normally considered to be of little consequence. The films made by the pair over the past 10 years hark back to the earliest days of video art. Mark Stringer and Rita Says are both performance artists and filmmakers based in London. This gallery also sells books and coffee, so drop in if you're doing a tour of the art scene in Shoreditch.

Hundred Years Gallery, 13 Pearson Street, Shoreditch, London, E2 8JD. Opening hours: Tuesday to Sunday 11am-6pm.

Admission: free. www.hundredyearsgallery.com

Most Certainly Absolutely Yes, video still © Mark Stringer

